



KeyTone Technologies

RFID SDK™ Software Installation Guide Release 2.0



This document contains proprietary information which is protected by copyright. All rights are reserved.

KeyTone Technologies
3140 De La Cruz Blvd, Suite 200
Santa Clara, CA 95054
Telephone (888) 816-0727
<http://www.keytonetech.com>
Email: info@keytonetech.com



THE SPECIFICATIONS AND INFORMATION REGARDING THE PRODUCTS IN THIS MANUAL ARE SUBJECT TO CHANGE WITHOUT NOTICE. ALL STATEMENTS, INFORMATION, AND RECOMMENDATIONS IN THIS MANUAL ARE BELIEVED TO BE ACCURATE BUT ARE PRESENTED WITHOUT WARRANTY OF ANY KIND, EXPRESS OR IMPLIED. USERS MUST TAKE FULL RESPONSIBILITY FOR THEIR APPLICATION OF ANY PRODUCTS.

THE SOFTWARE LICENSE AND LIMITED WARRANTY FOR THE ACCOMPANYING PRODUCT ARE SET FORTH IN THE INFORMATION PACKET THAT SHIPPED WITH THE PRODUCT AND ARE INCORPORATED HEREIN BY THIS REFERENCE. IF YOU ARE UNABLE TO LOCATE THE SOFTWARE LICENSE OR LIMITED WARRANTY, CONTACT YOUR KEYTONE TECHNOLOGIES REPRESENTATIVE FOR A COPY.

NOTWITHSTANDING ANY OTHER WARRANTY HEREIN, ALL DOCUMENT FILES AND SOFTWARE OF THESE SUPPLIERS ARE PROVIDED "AS IS" WITH ALL FAULTS. KEYTONE TECHNOLOGIES DISCLAIMS ALL WARRANTIES, EXPRESSED OR IMPLIED, INCLUDING, WITHOUT LIMITATION, THOSE OF MERCHANTABILITY, FITNESS FOR A PARTICULAR PURPOSE AND NON-INFRINGEMENT OR ARISING FROM A COURSE OF DEALING, USAGE, OR TRADE PRACTICE.

IN NO EVENT SHALL KEYTONE TECHNOLOGIES OR ITS SUPPLIERS BE LIABLE FOR ANY INDIRECT, SPECIAL, CONSEQUENTIAL, OR INCIDENTAL DAMAGES, INCLUDING, WITHOUT LIMITATION, LOST PROFITS OR LOSS OR DAMAGE TO DATA ARISING OUT OF THE USE OR INABILITY TO USE THIS MANUAL,

KeyTone RFID SDK Software Installation Guide

Copyright © 2005 KeyTone Technologies, Inc. All rights reserved.

KeyTone RFID SDK™ – Installation Manual

KEYTONE RFID SDK™ – INSTALLATION MANUAL	3
1. OVERVIEW	4
2. SYSTEM REQUIREMENT	4
3. SPECIAL NOTES	4
4. RFID SDK™ LICENSING	5
5. TO START FROM DISK	5
6. INSTALLING .NET FRAMEWORK AND SQL DATABASE ENGINE	6
7. CUSTOMER INFORMATION	8
8. LICENSE AGREEMENT	10
9. MODE OF INSTALLATION	11
10. REVIEW INFORMATION	13
11. RFID SDK™ INSTALLATION STATUS	14
12. UNINSTALLING RFID SDK™	16
13. SPECIAL NOTES	18

1. Overview

The KeyTone RFID SDK™ installs through a user friendly installation wizard. The wizard detects the availability of the required software and prompts the user to install the same if the required software packages are not found in the system. The purpose of this document is to help the user understand the installation process.

2. System Requirement

PC with a Pentium 100 MHz minimum processor
Microsoft® Windows® 2000 operating system; Microsoft® Windows® NT® 4.0 with service pack 3; Microsoft .NET framework
512 MB of RAM minimum
50 MB free disk space
CD-ROM drive
Super VGA (800x600)
Mouse or compatible pointing device

3. Special Notes

1. To install KeyTone RFID SDK™ on Windows NT4, 2000 or Windows XP user must have the administrator rights.
2. Please ensure that any personal firewall is disabled. The RFID SDK™ has a distributed architecture. It works on .Net remoting which requires open TCP/IP channels. However, the installation package does not access the internet and no company information is transmitted. Typical ports used are between 7000 to 7500.
3. If the need arises to reinstall RFID SDK™ then, ensure that the earlier version of the RFID SDK™ is completely uninstalled.
4. KeyTone RFID SDK™ can not be uninstalled if the MS SQL Database Engine is not present (or uninstalled). If the MS SQL Database Engine is unintentionally removed, then install MS SQL Database Engine and then begin the process for uninstalling RFID SDK™.
5. After uninstalling the RFID SDK™, the following files remain in the system. If required, they can be deleted manually.
 - Wibu driver
 - MSDE i.e. the SQL database engine and

4. RFID SDK™ Licensing

The trial version of RFID SDK™ allows creation of limited number of readers (three only) and is a time bound copy of the full version, with all its functionality made available to the user to test the product. The trial version of RFID SDK™ can be converted to a full version by purchase of an appropriate license.

NOTE

1. This is a dongle activated license.
2. A license file (.lic) is shipped to the customer (either through email) or along with the dongle (hard copy) upon confirmation of the order and receipt of appropriate payment.
3. The dongle needs to be connected to the USB port to activate the license.
4. A .lic file for the evaluation version is already present in the path

Start – Program – KeyToneTech-Service

This file needs to be replaced with the new license file received from KeyTone Technologies, Inc. to enable the appropriate license. This can be done by either copying the .lic file into the path mentioned above, or by copying the .lic file into the License UI under the Help menu in the Admin Console of the RFID SDK™.

5. The dongle needs to remain connected to the USB port of the Host PC to ensure continuous operation of the RFID SDK™.
6. Please ensure the safe custody of the dongle, creating a duplicate dongle with the same license is time consuming and may result in significant down time.

5. To start from disk

Insert your disk into the CD-ROM drive. If you have Windows 9x, NT4, 2000 or Windows XP, the Setup program should start automatically. If the Setup program does not start automatically, double-click **setup.exe** from the directory window for your CD-ROM drive.

Notes:

1. Insert the CD-ROM “KeyTone RFID SDK™”
2. The explorer automatically starts the KeyTone RFID SDK™ Setup Program
3. Click on **Next** to continue

6. Installing .NET Framework and SQL Database Engine

The SDK installation wizard checks for .NET framework and the SQL database engine and installs the same on the system, before proceeding with the installation of the RFID SDK™.

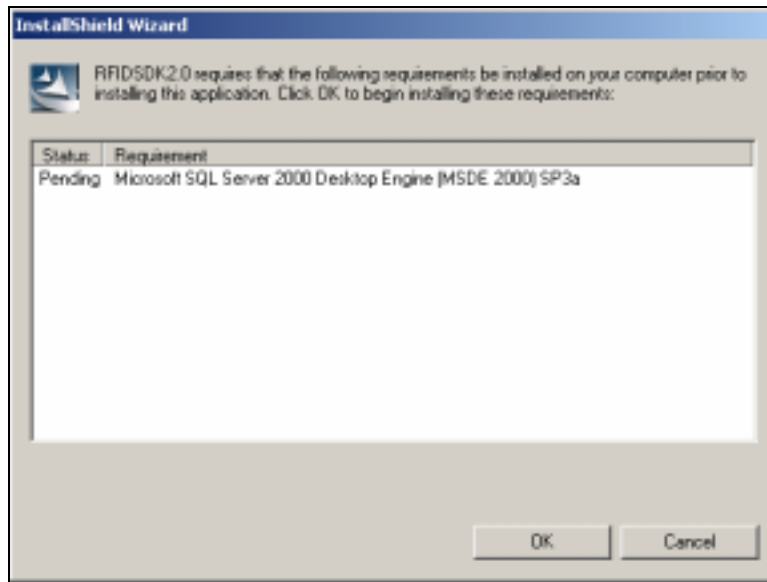


Figure 1

Figure 1 shows the RFID SDK™ prompting the user to install the SQL Engine

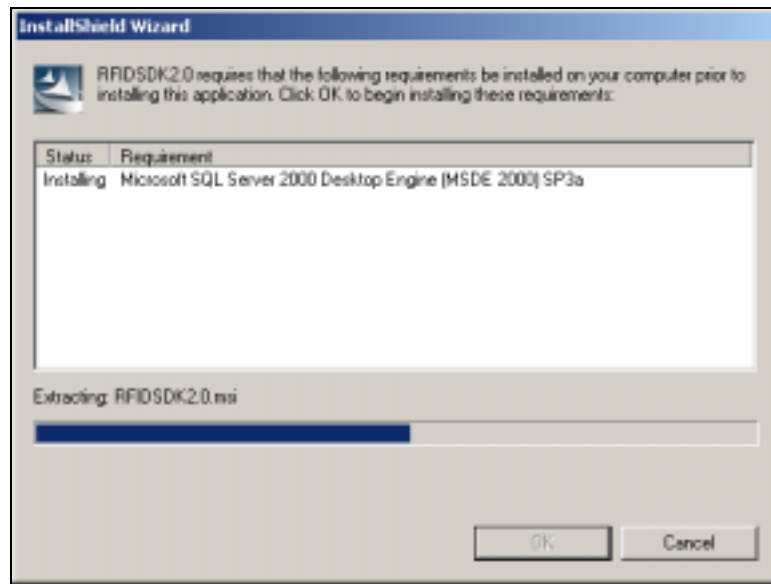


Figure 2

Figure 2 shows the installation of SQL Engine in progress

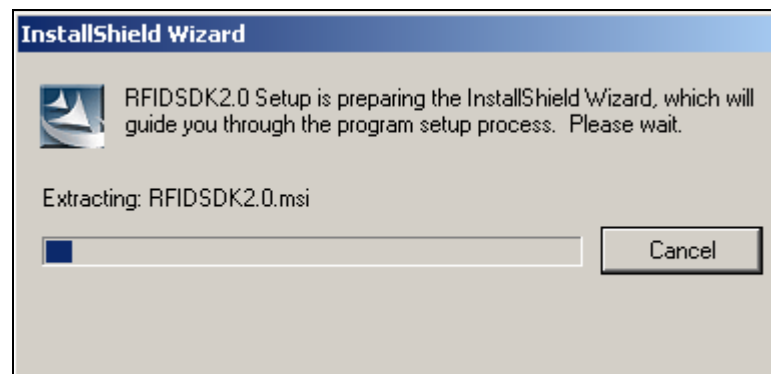


Figure 3

Figure 3 shows the RFID SDK™ preparing the InstallShield Wizard to proceed with the installation

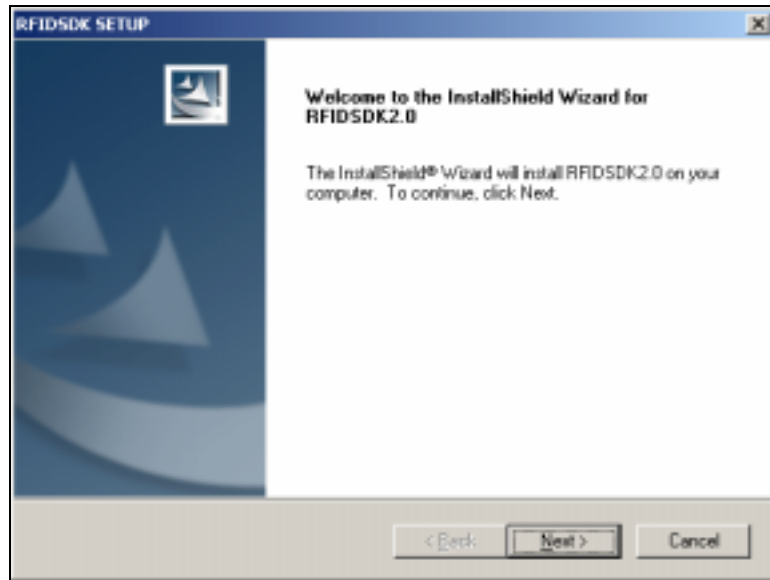


Figure 4

Figure 4 shows the RFID SDK™ prompting the user to continue installation of RFID SDK™ 2.0

7. Customer Information

- Enter user information like "*User Name*" and "*Company Name*".
- Select the radio button "*Anyone who uses this computer (all users)*" to all access to anybody using the machine.
- Select the radio button "*Only for me*" to restrict access.

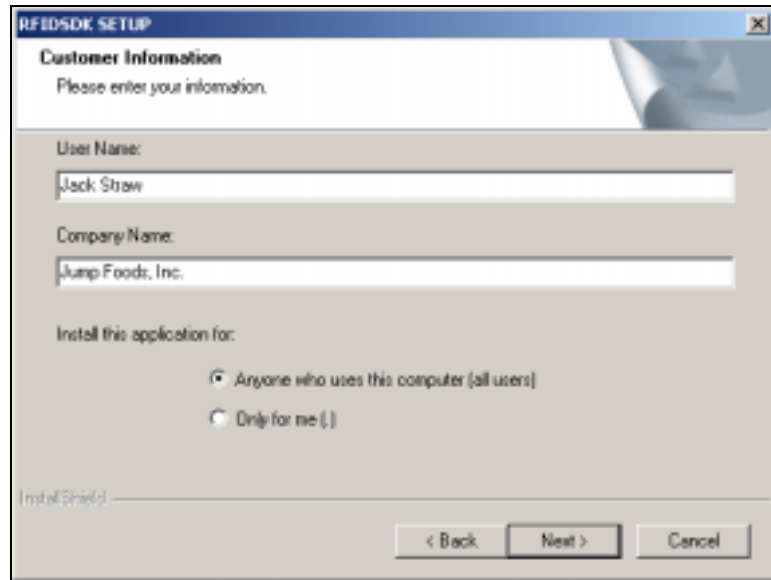


Figure 5

Figure 5 shows the RFID SDK™ prompting the user to enter user information.

8. License Agreement

To continue the installation process click **Yes** on the license agreement.

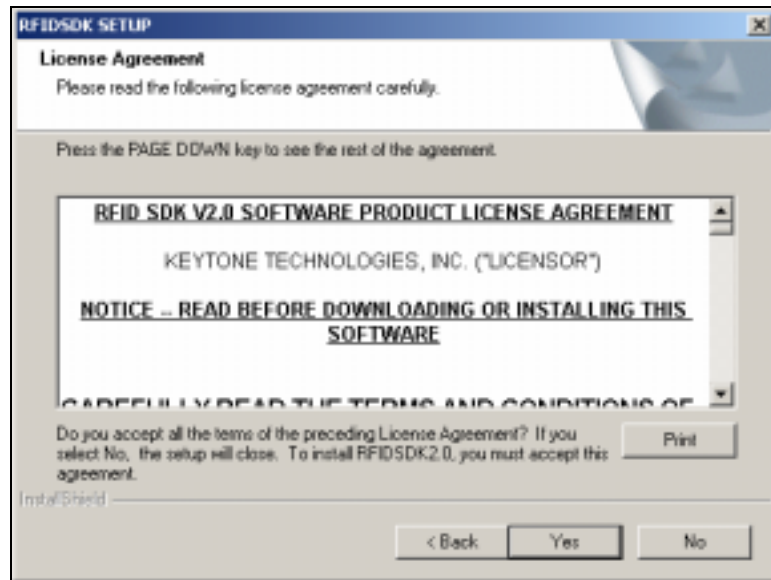


Figure 6

Figure 6 shows the RFID SDK™ prompting the user to enter the appropriate information in the License Agreement.

9. Mode of Installation

Choose the mode of setup from three options – click the radio button against the desired option to select that option.

- Typical
- Compact
- Custom

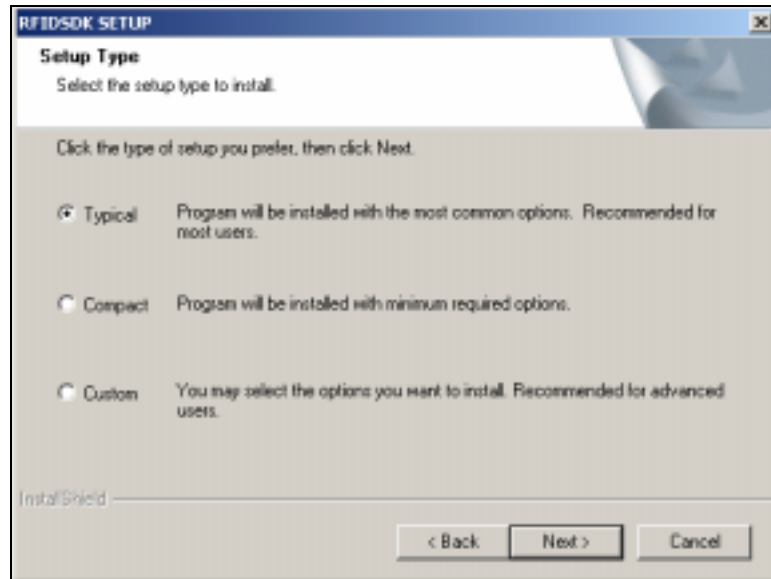


Figure 7

Figure 7 shows the RFID SDK™ prompting the user to choose the type of setup

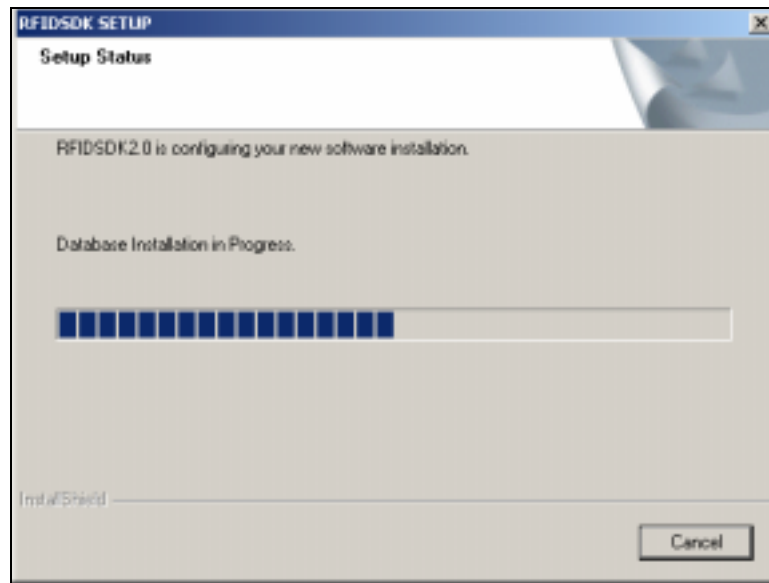


Figure 8

Figure 8 shows the database installation in progress

10. Review Information

The RFID SDK™ installation wizard displays the information entered by the user for review purpose, before proceeding with the installation.

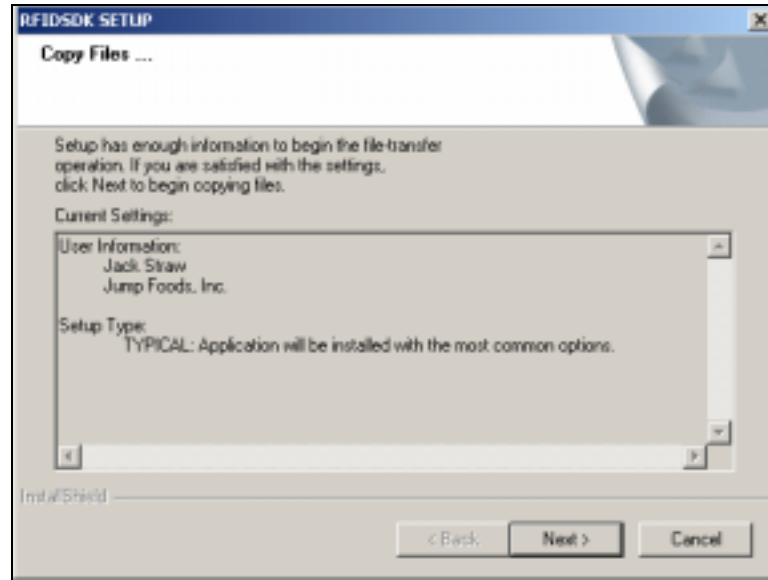


Figure 9

Figure 9 shows the RFID SDK™ installation wizard displaying the user information.

11. RFID SDK™ Installation Status

As mentioned earlier the RFID SDK™ installs itself through a wizard, it displays the status of the installation and finally displays an icon on the desktop for user convenience.

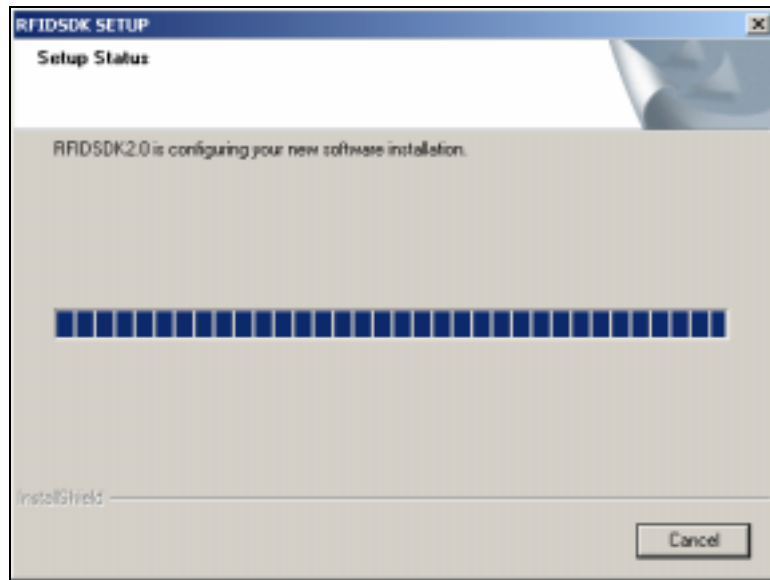


Figure 10

Figure 10 displays the status of the RFID SDK™ installation

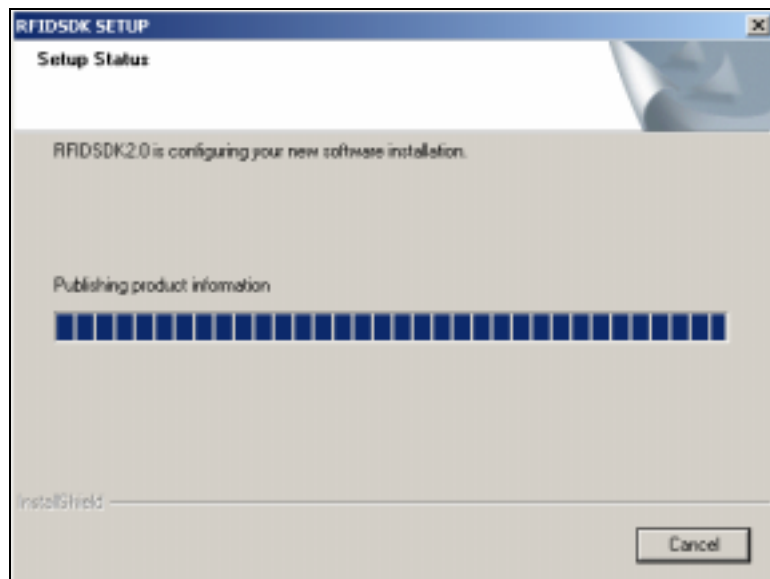


Figure 11

Figure 11 displays the status of the RFID SDK™ installation

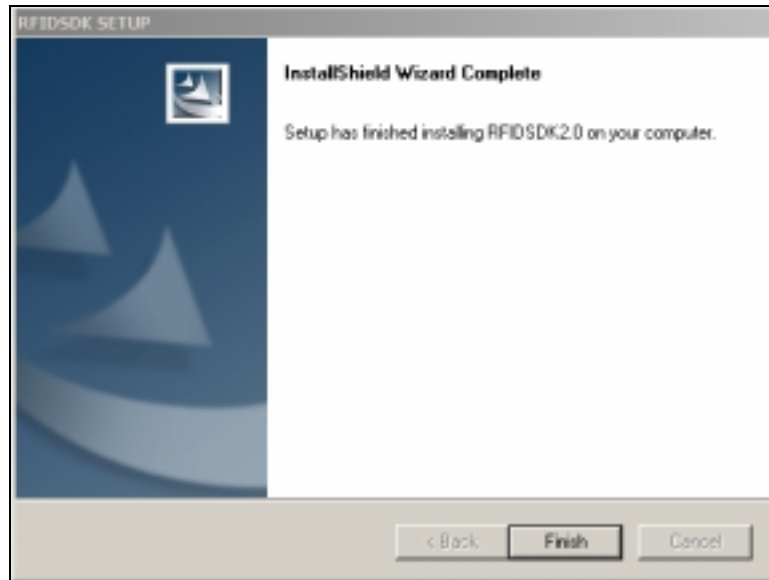


Figure 12

Figure 12 represents the status of RFID SDK™ installation

12. Uninstalling RFID SDK™

The KeyTone RFID SDK™ offers the user the ability to modify the features currently installed, or reinstall the entire program, or remove the entire program. Click the radio button against the desired option to select that option.

- Modify
- Repair
- Remove

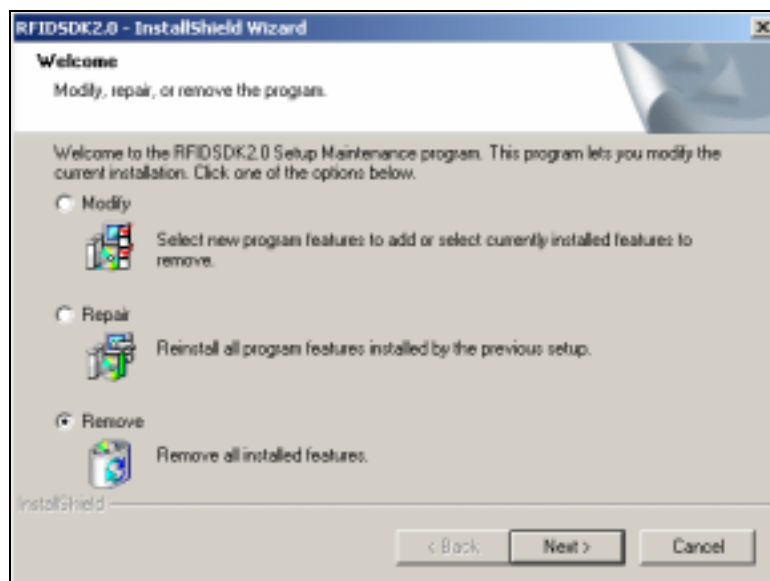


Figure 13

Figure 13 displays the options available to the user

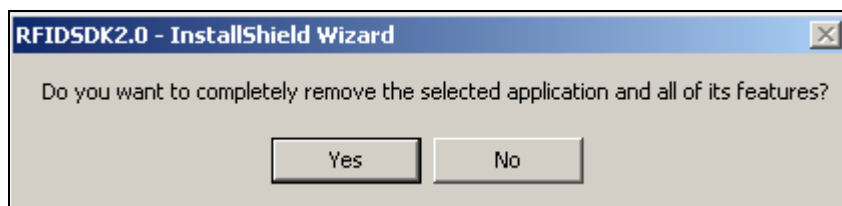


Figure 14

Figure 14 displays the dialogue box asking for confirmation of the remove operation.

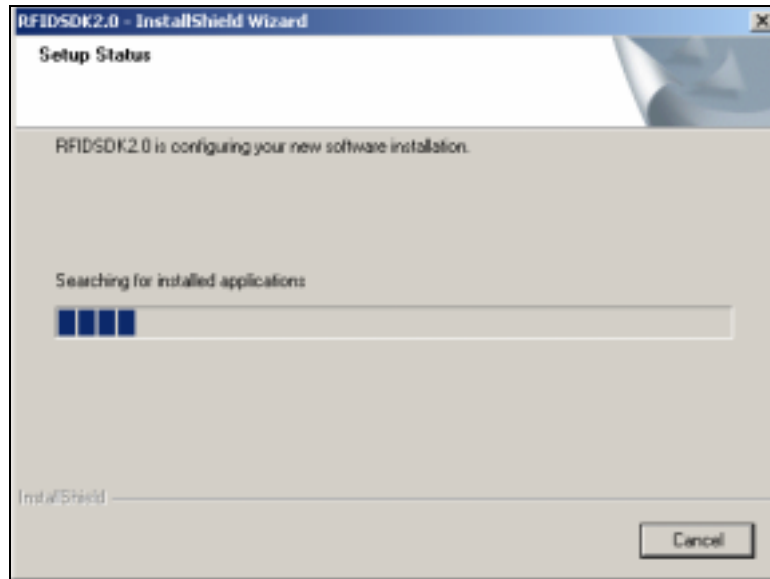


Figure 15

Figure 15 displays the status of RFID SDK™ uninstallation.

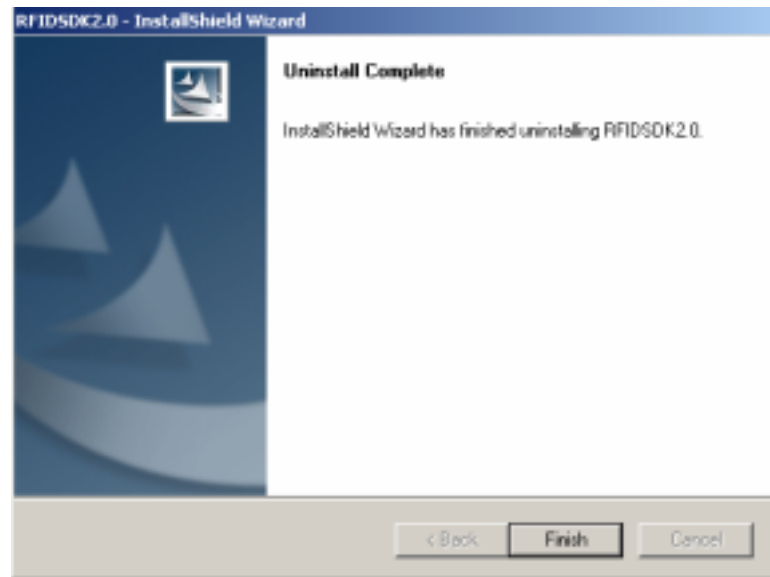


Figure 16

Figure 16 displays the status of RFID SDK™ uninstallation

13. Special Notes

1. To install KeyTone RFID SDK™ on Windows NT4, 2000 or Windows XP you must have the administrator rights.
2. Please ensure that any personal firewall is disabled.
3. If the need arises to reinstalling KeyTone RFID SDK™ then, ensure that the earlier version of the RFID SDK™ is completely uninstalled.
4. KeyTone RFID SDK™ can not be uninstalled if the MS SQL Database Engine is not present (or uninstalled). If the MS SQL Database Engine is unintentionally removed, then install MS SQL Database Engine and then begin the process for uninstalling KeyTone RFID SDK™.